



CORN

Supply and Demand

Source: USDA – National Agricultural Statistics Service and Economic Research Service

Prepared by:

Alan R. May, SDSU Extension Grain Marketing Specialist

South Dakota State University - Cooperative Extension Service - Economics Department

e-mail: alan.may@sdstate.edu Telephone: 605-688-4862

For additional market comments / outlook, grain prices, basis history, etc., log on to our web site:

<http://econ.sdstate.edu/>



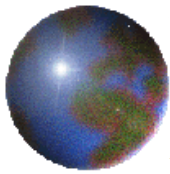
CORN: United States Supply / Demand

(in million bushels)

econ.sdstate.edu	2004	2005	2006	2007	2008	Mar-10 2009
Beginning Stocks	958	2,114	1,967	1,304	1,624	1,673
Production	11,807	11,114	10,531	13,038	12,092	13,131
Imports	<u>11</u>	<u>9</u>	<u>12</u>	<u>19</u>	<u>14</u>	<u>10</u>
Total Supply	12,776	13,237	12,510	14,361	13,730	14,814
Feed / Residual	6,158	6,155	5,591	5,913	5,246	5,550
Food, Seed, Industrial	2,686	2,981	3,490	4,387	4,953	5,565
* Ethanol for fuel	1,323	1,603	2,119	3,049	3,677	4,300
Exports	<u>1,818</u>	<u>2,134</u>	<u>2,125</u>	<u>2,437</u>	<u>1,858</u>	<u>1,900</u>
Total Use	10,662	11,270	11,206	12,737	12,057	13,015
Ending Stocks	2,114	1,967	1,304	1,624	1,673	1,799
Stocks to use ratio	19.8	17.5	11.6	12.8	13.9	13.8
Planted Acres	80.9	81.8	78.3	93.5	86.0	86.5
Harvested Acres	73.6	75.1	70.6	86.5	78.6	79.6
Yield/harvested acre	160.4	148.0	149.1	150.7	153.9	164.9

* Ethanol for fuel is included in the category of Food, Seed, Indust. (FSI) use. Ethanol is seperated in this balance sheet as a sub-category of FSI for informational purposes.

Source: USDA - National Agricultural Statistics Service & Economic Research Service



CORN: World Supply/Demand (million bushels)

econ.sdstate.edu	2004	2005	2006	2007	2008	Mar-10 2009-10
Beginning Stocks	4,089	5,202	4,908	4,285	5,090	5,764
Production	28,055	27,434	27,993	31,192	31,279	31,640
Mktg. year imports	3,036	3,129	3,575	3,872	3,222	3,258
Total Supply	35,179	35,765	36,476	39,349	39,591	40,661
Mktg. year exports	3,081	3,186	3,693	3,882	3,302	3,364
Consumption	26,975	27,711	28,620	30,388	30,606	31,886
Total Use	30,056	30,897	32,313	34,270	33,908	35,250
Ending Stocks *	5,168	4,925	4,281	5,090	5,764	5,517

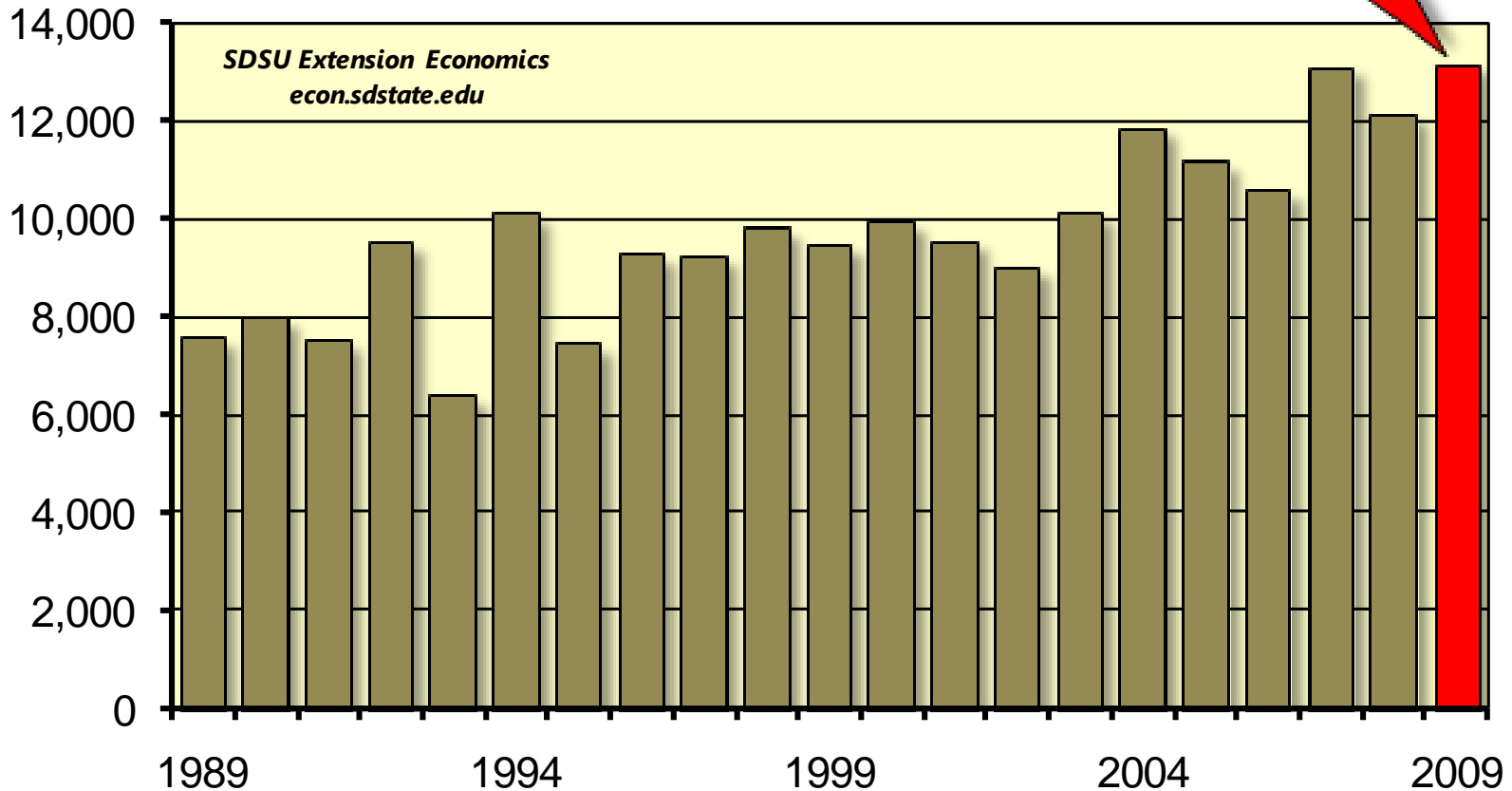
* Ending stocks are estimates because world imports and exports may not balance. This is due to differences in marketing years, grain in transit, and reporting discrepancies in some countries.

Source: USDA - Foreign Ag Service and Economic Research Service



U.S. Corn Production

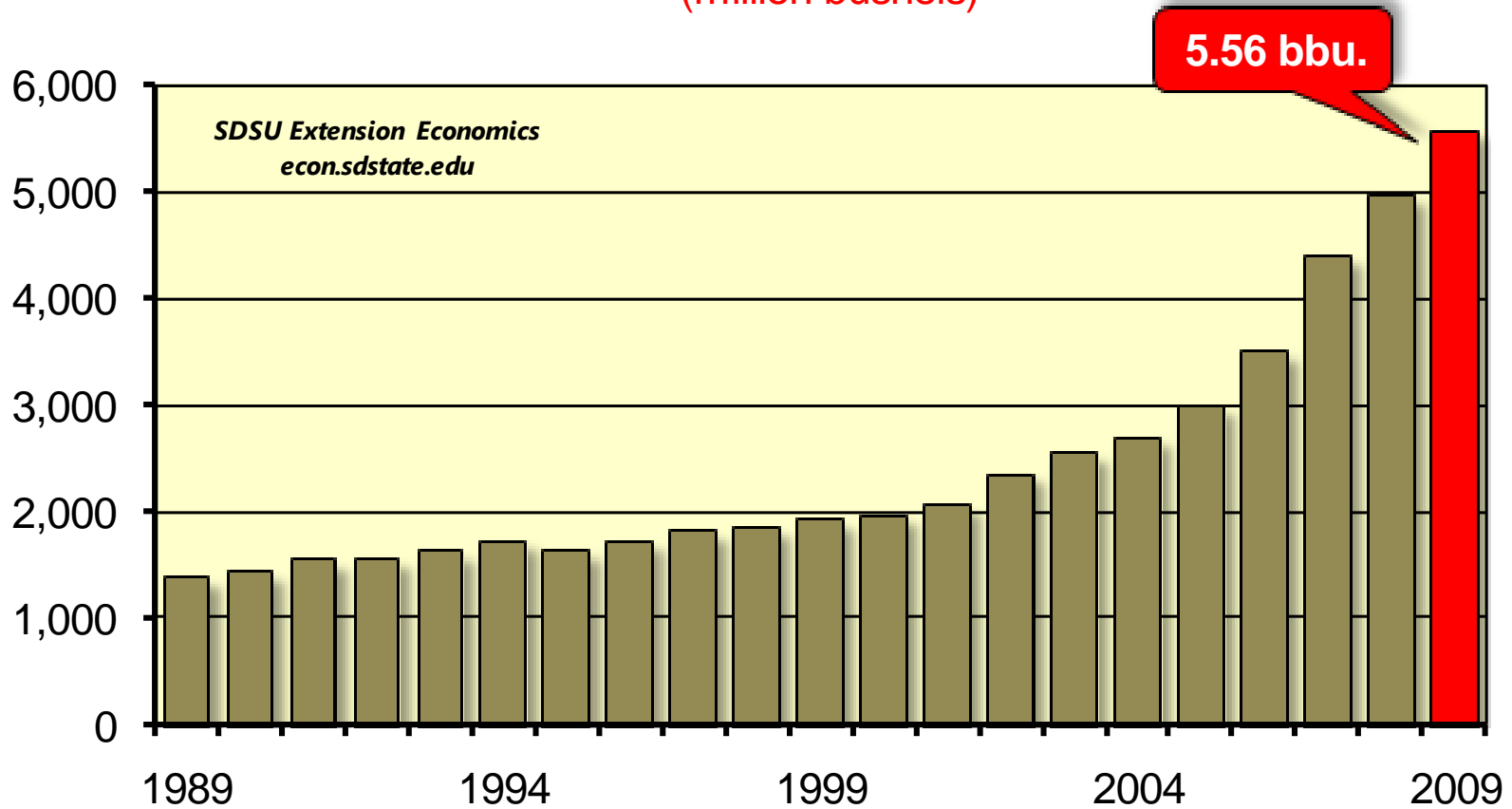
(million bushels)



13.13 bbu.



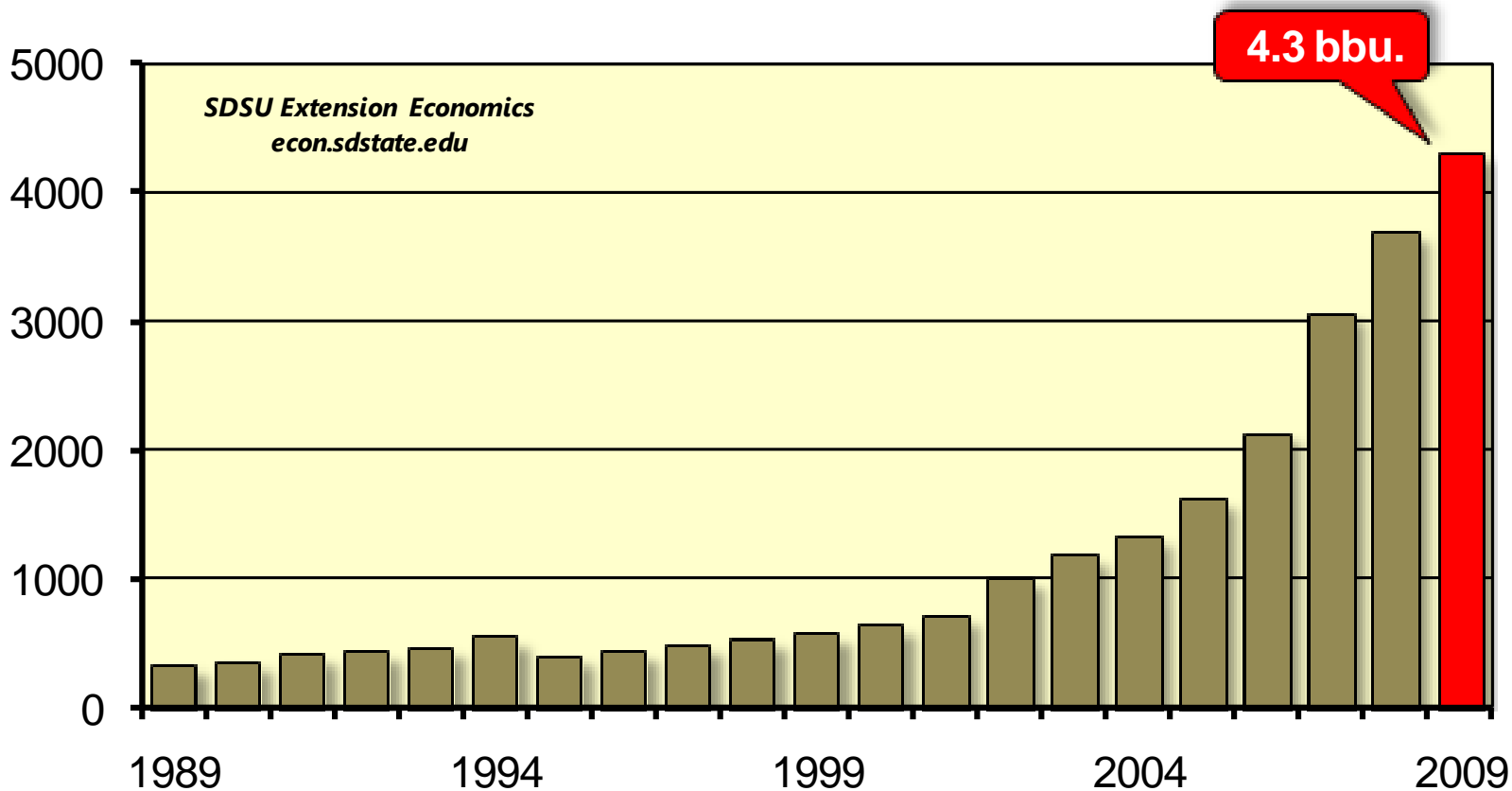
U.S. Corn - Food, Seed, Industrial (million bushels)





U.S. Corn used for Ethanol

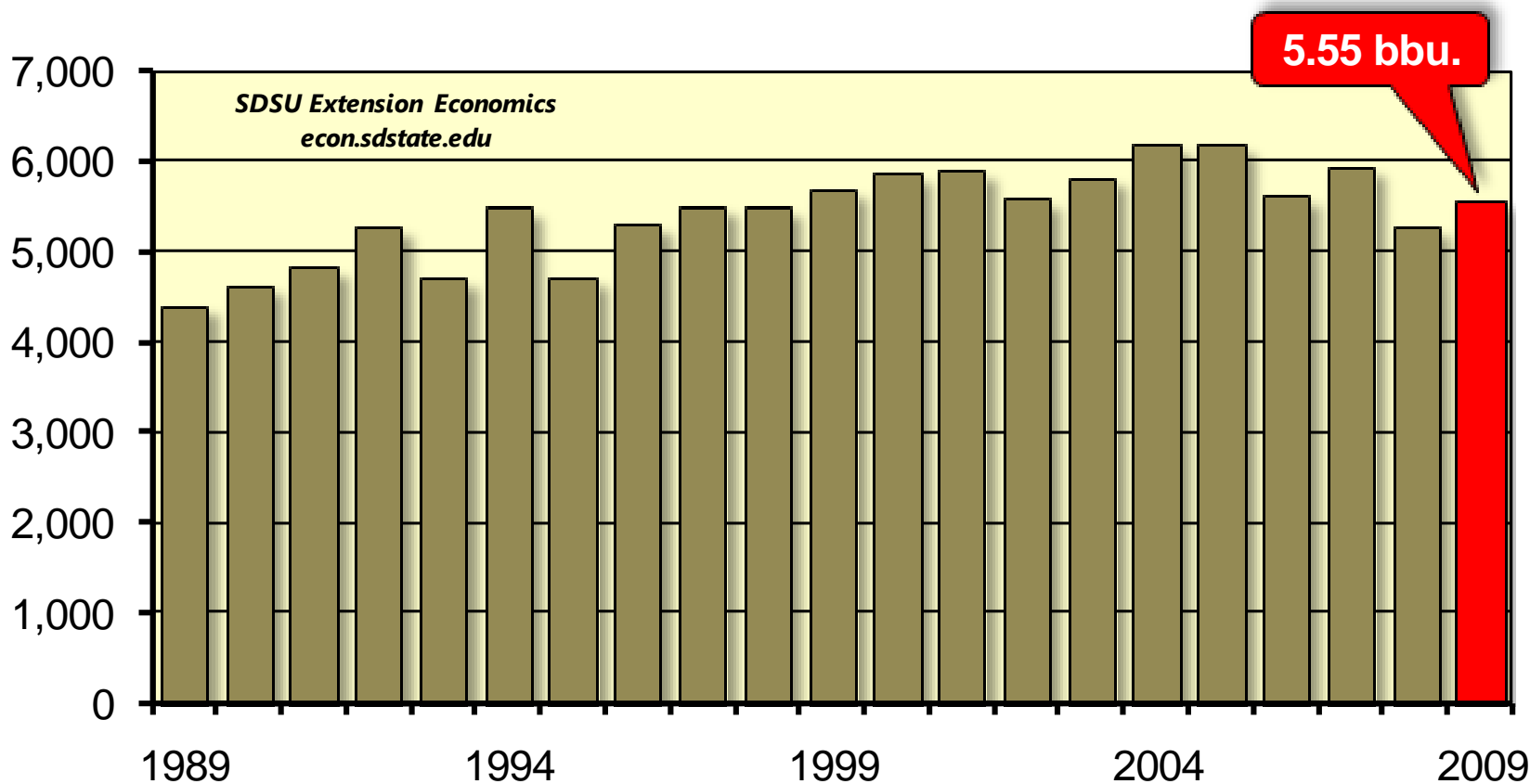
(million bushels)





U.S. Corn - Feed / Residual

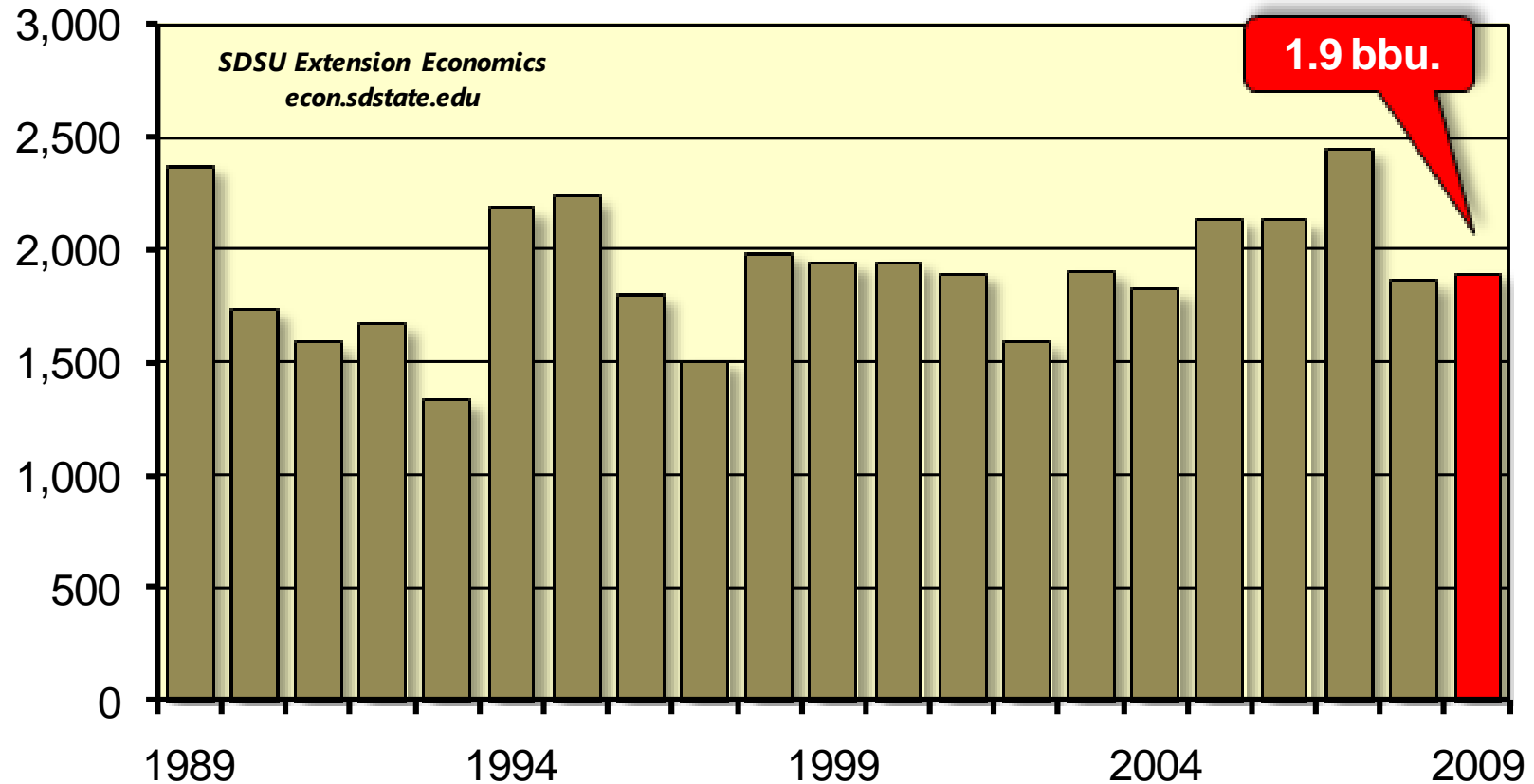
(million bushels)





U.S. Corn Exports

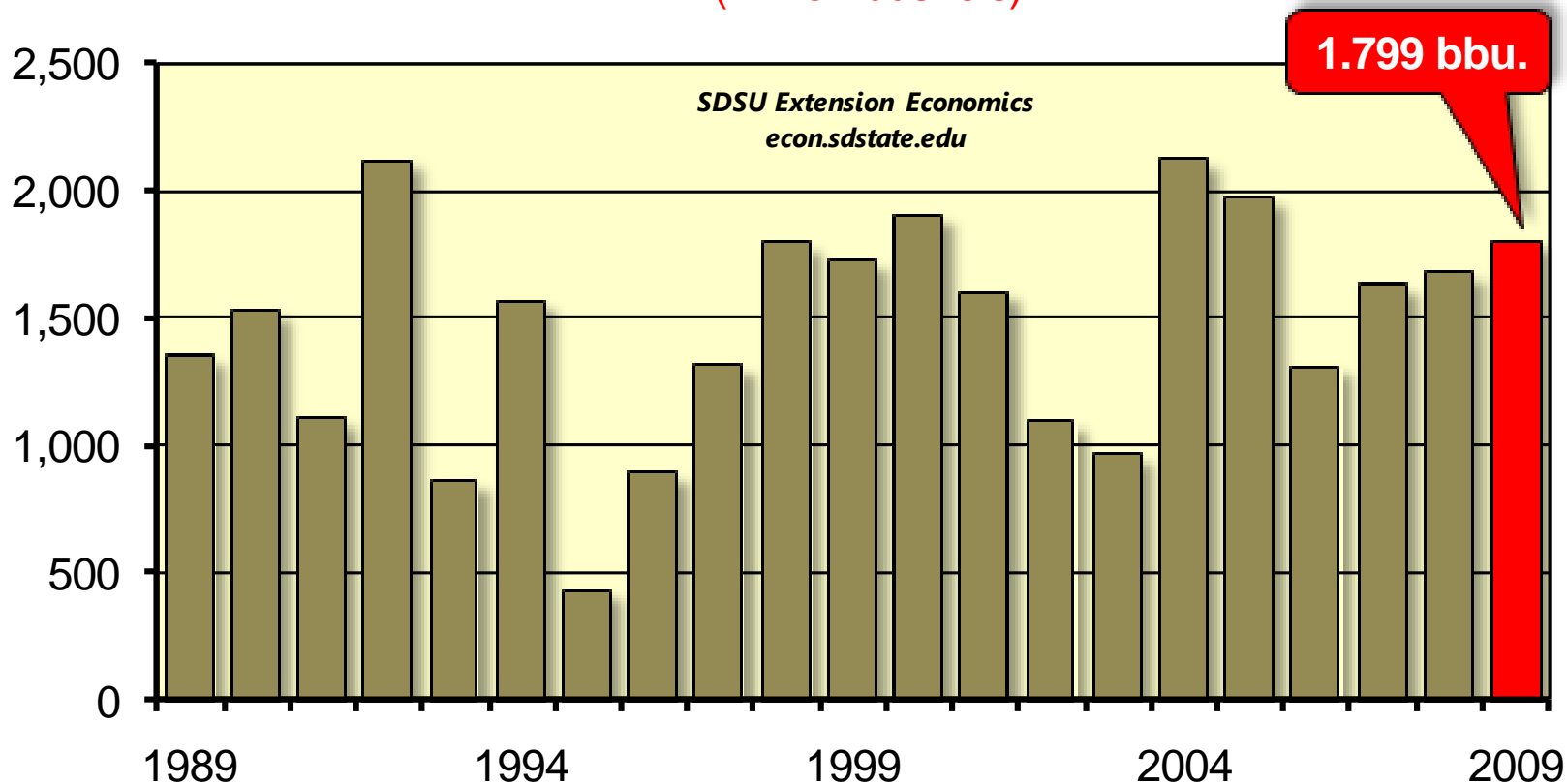
(million bushels)

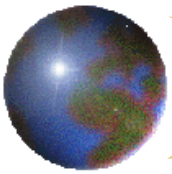




U.S. Corn Ending Stocks

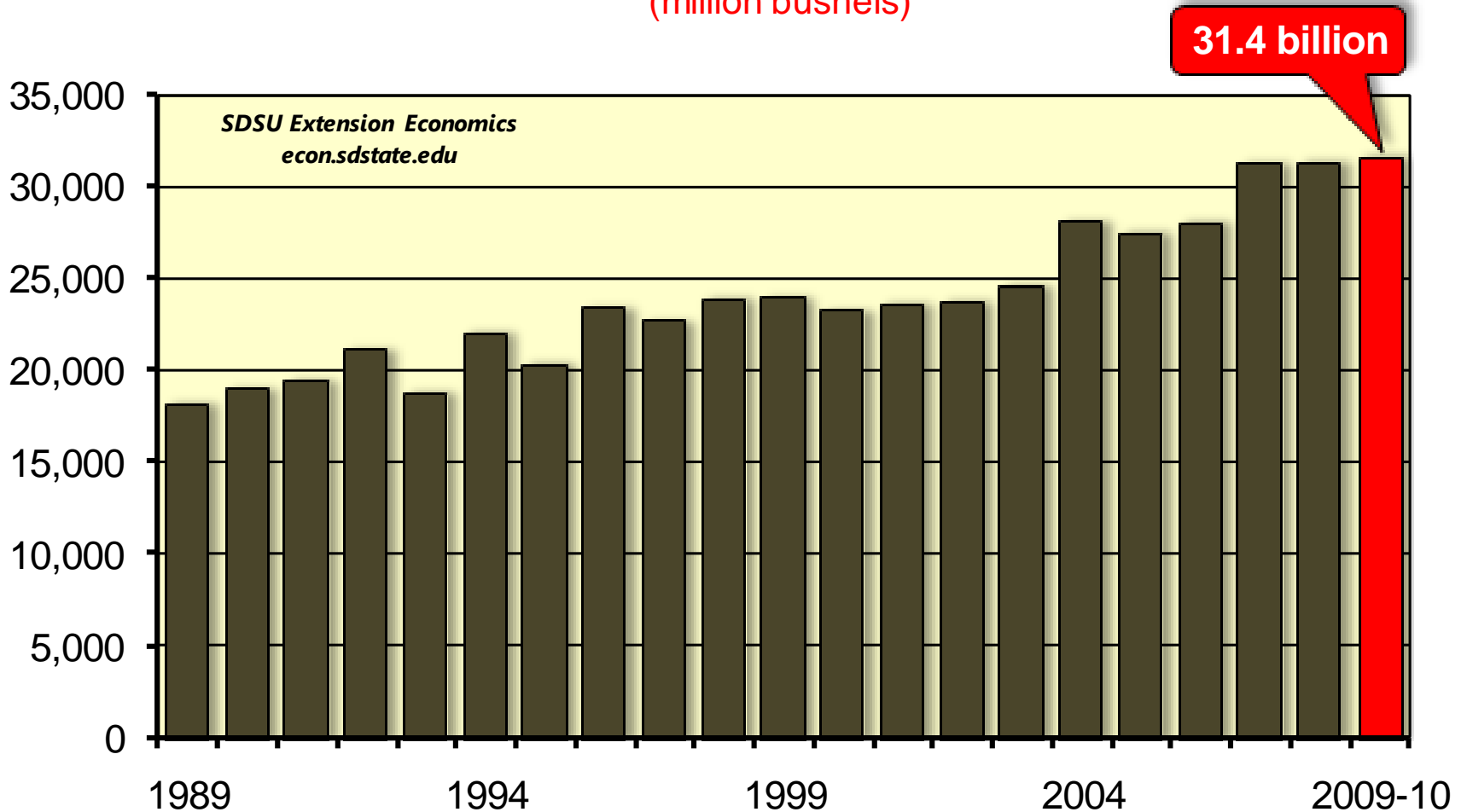
(million bushels)

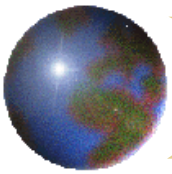




CORN: World Production

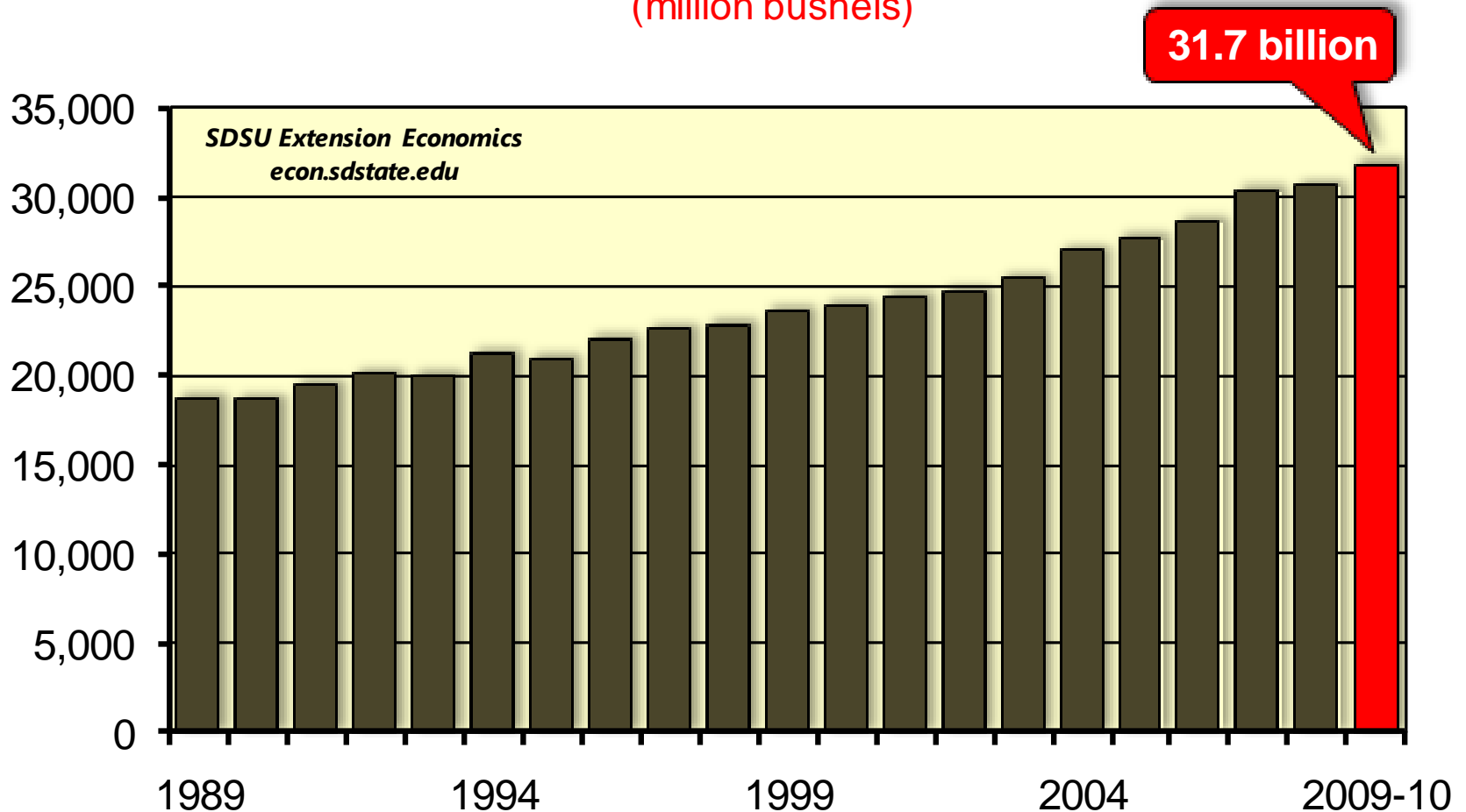
(million bushels)

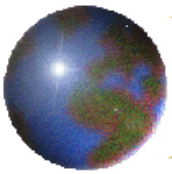




CORN: World Domestic Use

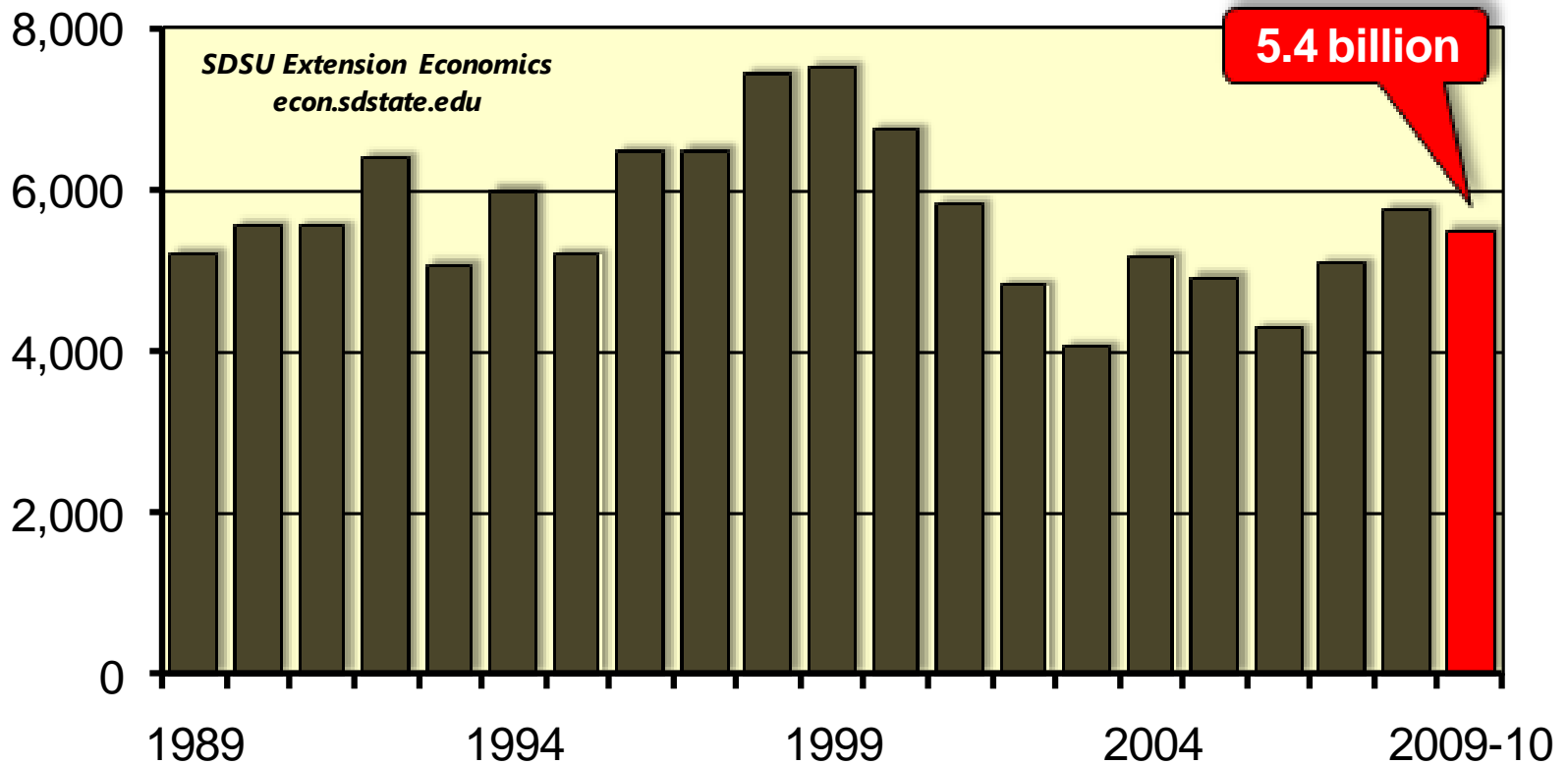
(million bushels)





CORN: World Ending Stocks

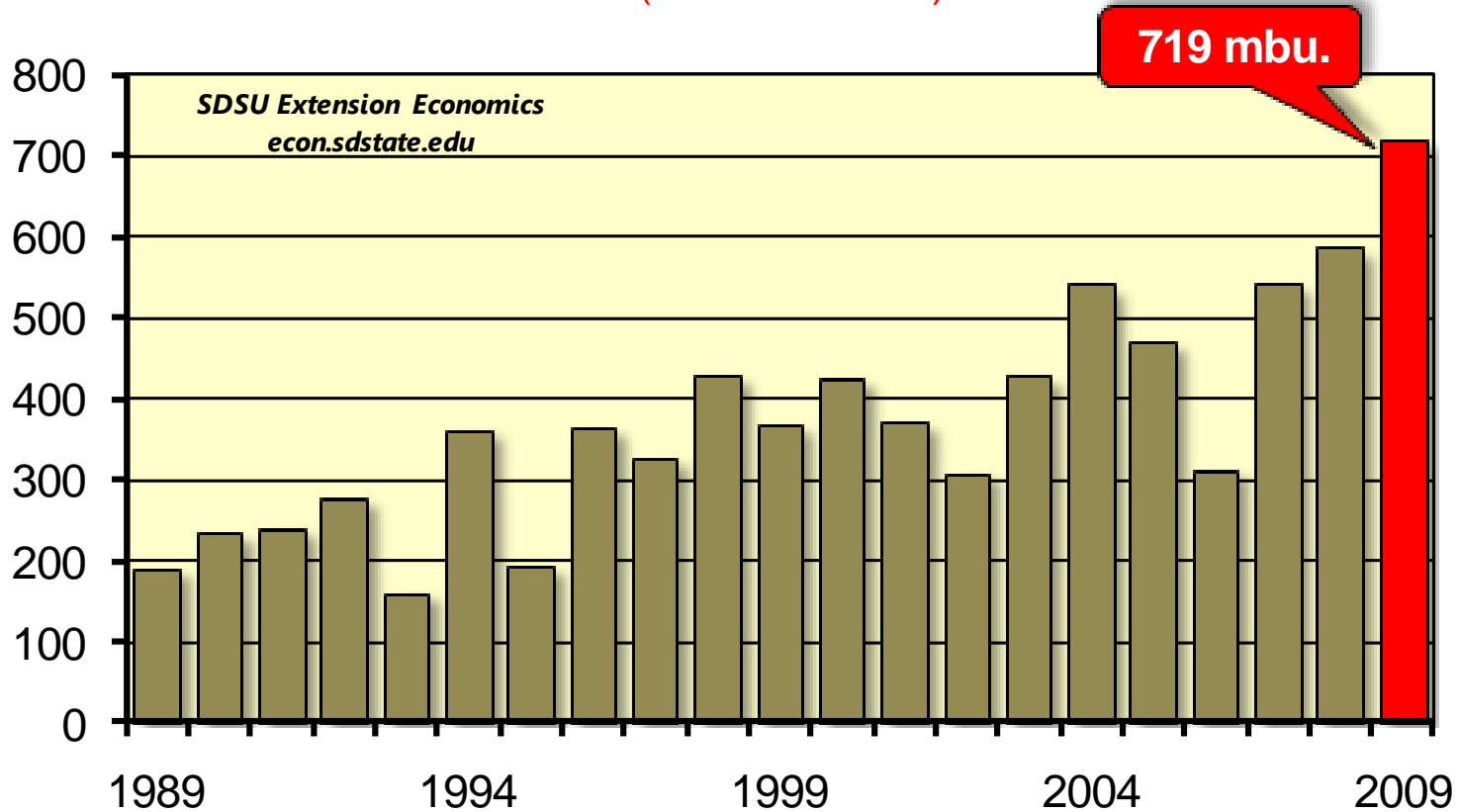
(million bushels)





South Dakota Corn Production

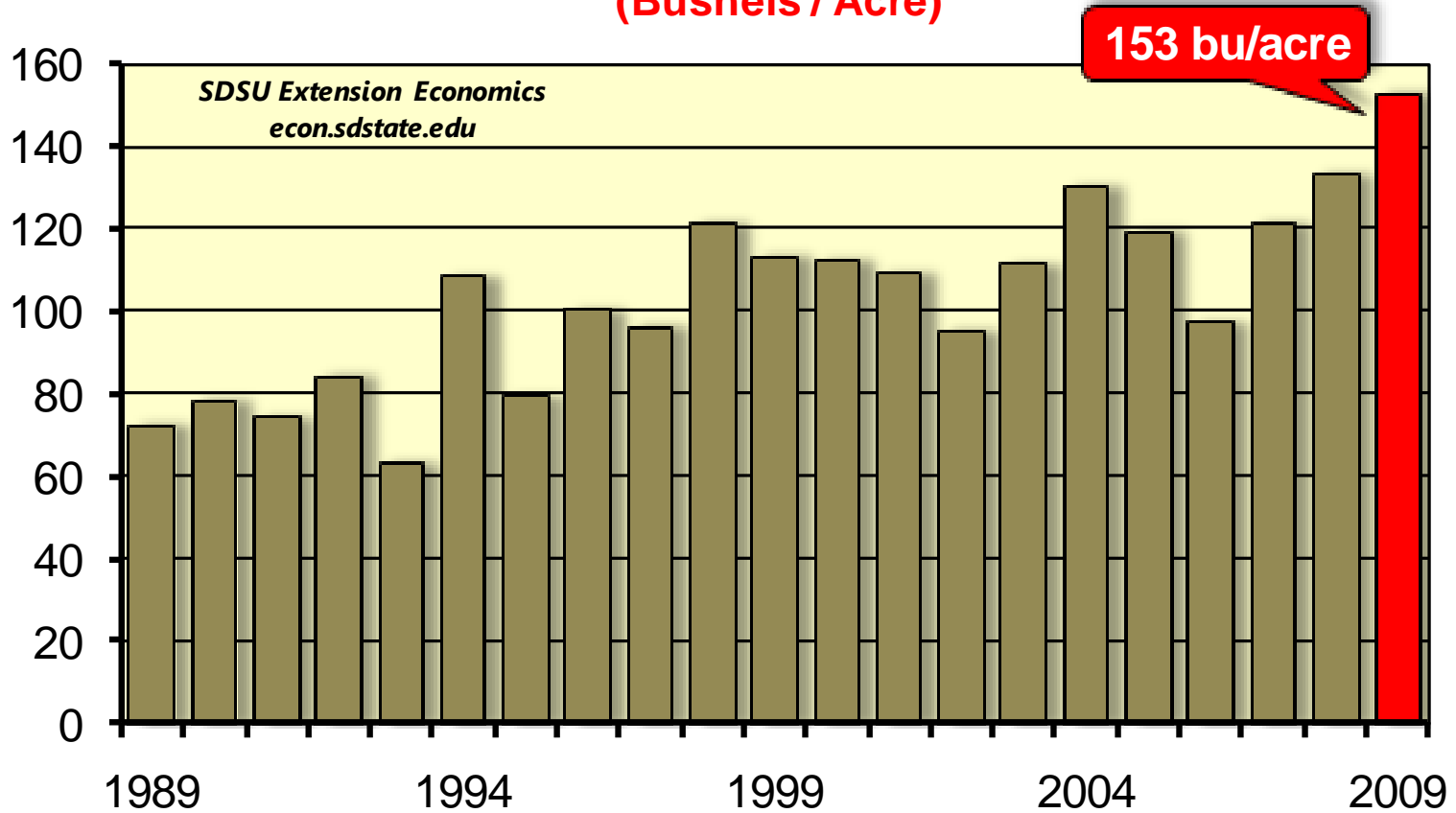
(million bushels)



Source: USDA NASS- South Dakota Agricultural Statistics Service



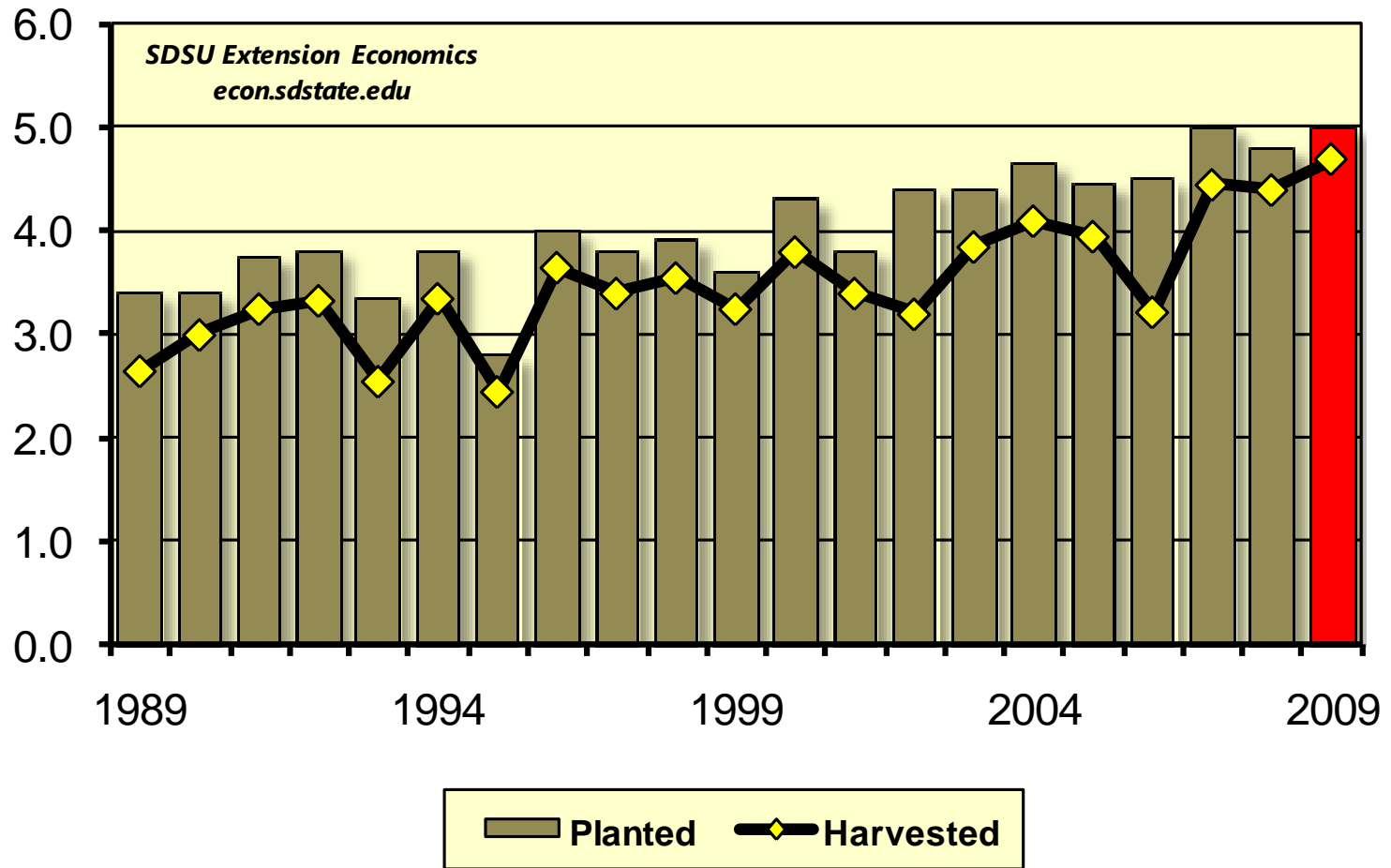
South Dakota Statewide Average Corn Yield (Bushels / Acre)



Source: USDA NASS - South Dakota Agricultural Statistics Service



SD Corn: Planted vs. Harvested Acres (million acres)



Source: USDA NASS - South Dakota Agricultural Statistics Service



CORN

Supply and Demand

Source: USDA – National Agricultural Statistics Service and Economic Research Service

Prepared by:

Alan R. May, SDSU Extension Grain Marketing Specialist

South Dakota State University - Cooperative Extension Service - Economics Department

e-mail: alan.may@sdstate.edu Telephone: 605-688-4862

For additional market comments / outlook, grain prices, basis history, etc., log on to our web site:

<http://econ.sdstate.edu/>