

Cash prices were mixed during August across different classes of cattle. Prices moved sharply higher for feeder cattle, while the other classes remained mostly steady (figure 1). On the futures side, live cattle futures traded sharply higher, which carried over to higher deferred feeder cattle futures. The weekly price for stockers shows that trading has occurred in a narrow range in recent weeks at a level even with the past three years (figure 2). The basis on stocker cattle for November has averaged around \$13 per cwt, suggesting November cash for stockers of \$130 per cwt. However, the basis levels in recent years reflect relatively low corn prices. In August the basis on stockers was a relatively narrow \$12.24 per cwt. Seasonal supply pressure on stockers suggests prices trending lower until late November and a single-digit basis suggests a stocker price of \$120-125 per cwt would be more reasonable to expect.

The differences in feeder and stocker cattle prices compared to last year reflect the surprise setback to expansion plans and to the cattle cycle. Rebuilding herds will take heifers out of the mix. National pasture conditions are currently better than a year ago, when modest expansion was planned. The sharply higher corn prices also mean the cost of gain has increased. Fed cattle present a paradox. Beef production is higher than a year ago, but fed cattle cash and futures prices continue to remain well above last year.

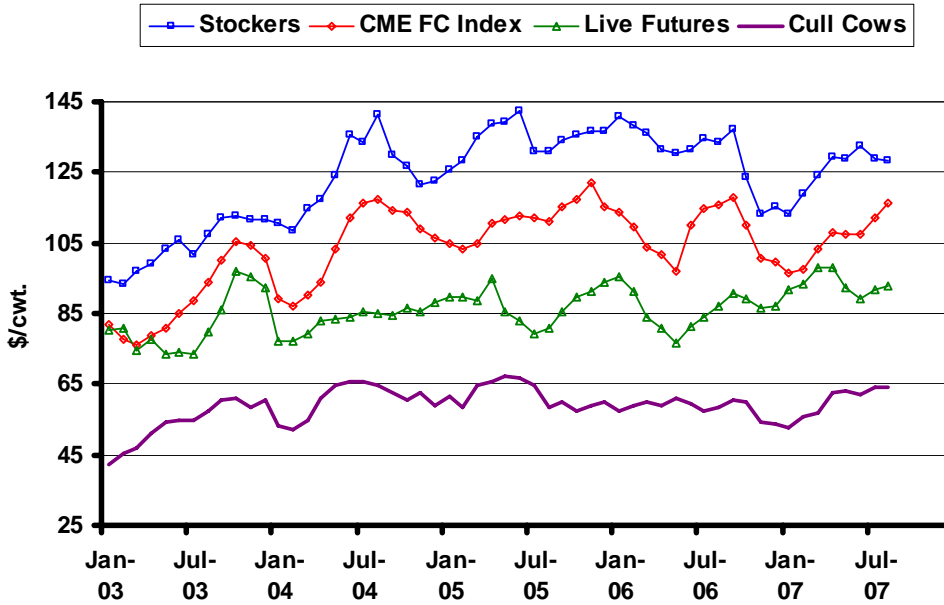
A carryover effect from higher grain prices has been more opportunities to forward price for longer periods of time. Open interest in the deferred contract months is higher compared to a year ago. A similar increase in activity is present in the forward contract market for fed cattle. The weekly packer owned report shows the volume (weekly and cumulative) and basis range for cattle contracted. The total and volumes by month exceed levels from a year ago (figure 3). December in particular has a much higher volume contracted and recent basis levels have a wide range from -\$8.90 to +\$10.00. It is unclear how contracting volume is related to placement activity, futures price levels and placement weights.

The forward contract volume is higher, but still not substantially so compared to the other marketing practices. A look at a cross-section of practices shows a breakdown similar to that seen back in 2003. Total slaughter for steers and heifers for four weeks ending September 15 was 2,180,445 head. Using the various mandatory price reports for fed cattle slaughter the totals were obtained for formula, negotiated grid, forward contract and packer owned categories. Negotiated cash purchases (to be slaughtered within seven days) were also totaled for the four weeks. The breakdown by category shows that negotiated sales are still the largest category (figure 4). Forward contracted sales only accounted for 4 percent of slaughter volume.

The latest WASDE report had increases in the price projections for fed cattle. Futures prices remain much higher than the projection range through the second quarter of 2008, suggesting pricing strategies are warranted (figure 5). A slightly different pattern exists for feeder cattle. The ERS price projections for feeder cattle are slightly below futures for the fourth quarter of 2007 (figure 6). For the first half of 2008 there is still upside potential for futures prices, suggesting protection strategies are warranted – of interest to those considering backgrounding.

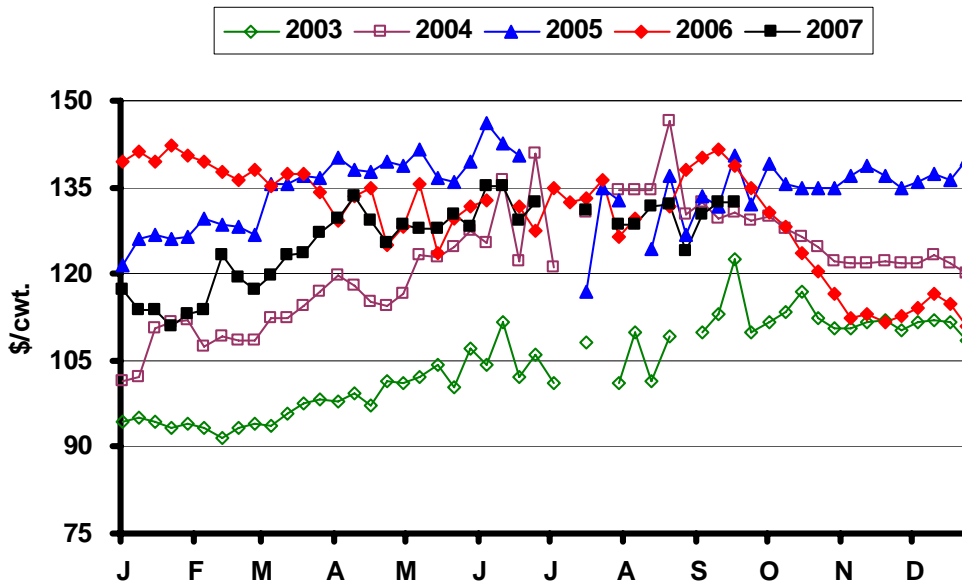
* Diersen is an associate professor in the Department of Economics at South Dakota State University. Contact him at 605-688-4864 or matthew.diersen@sdstate.edu with questions or comments.

Fig. 1. Monthly South Dakota Cattle Prices



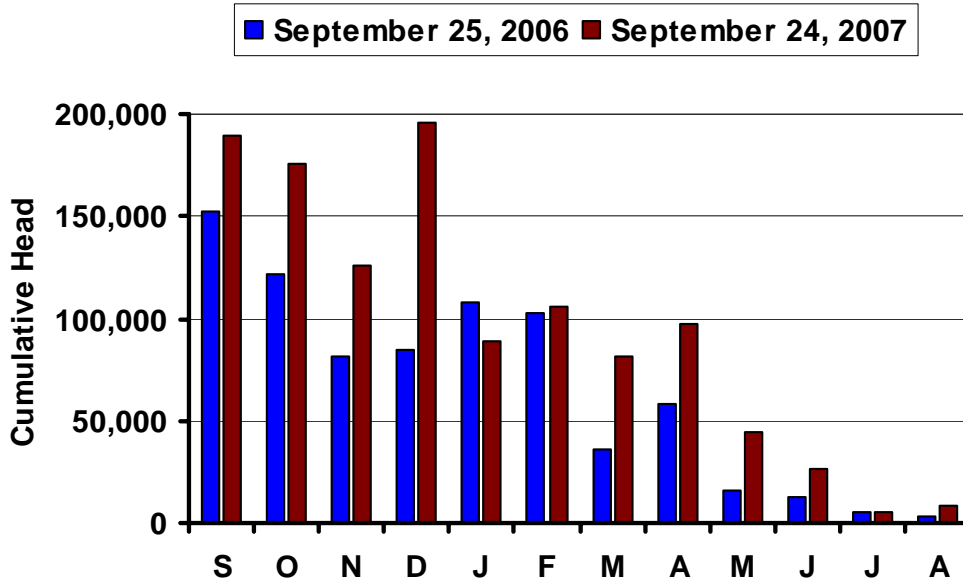
Sources: CME, USDA-AMS, & SDSU

Fig. 2. Weekly South Dakota Stocker Cattle Prices



Sources: USDA-AMS & SDSU

Fig. 3. Forward Contract Purchased Cattle



Source: AMS, LM_CT153

Fig. 4. Recent Slaughter by Purchase Type

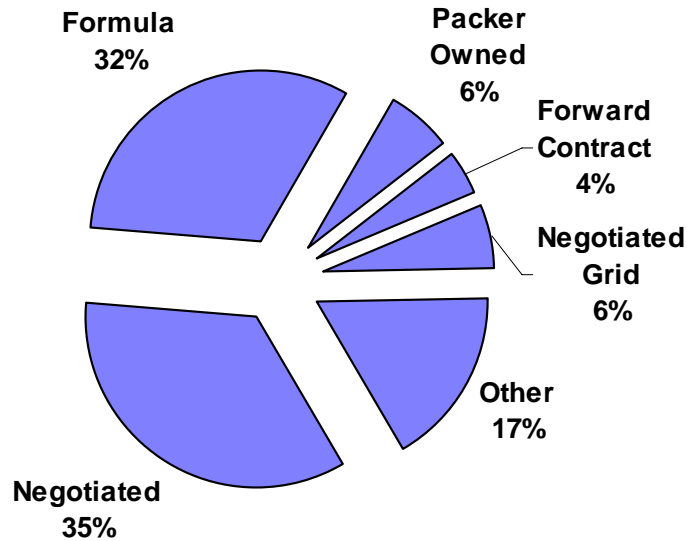
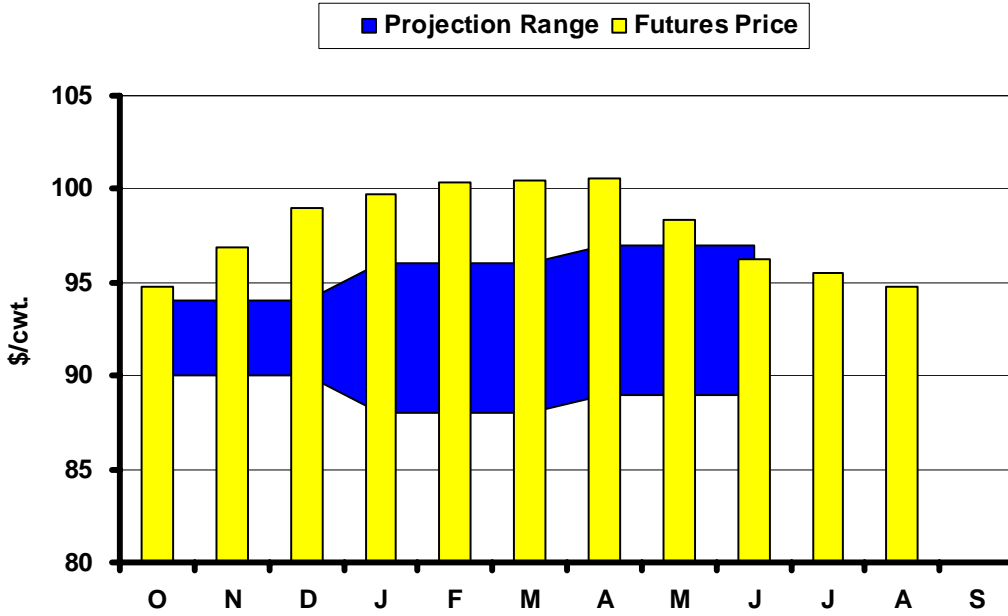
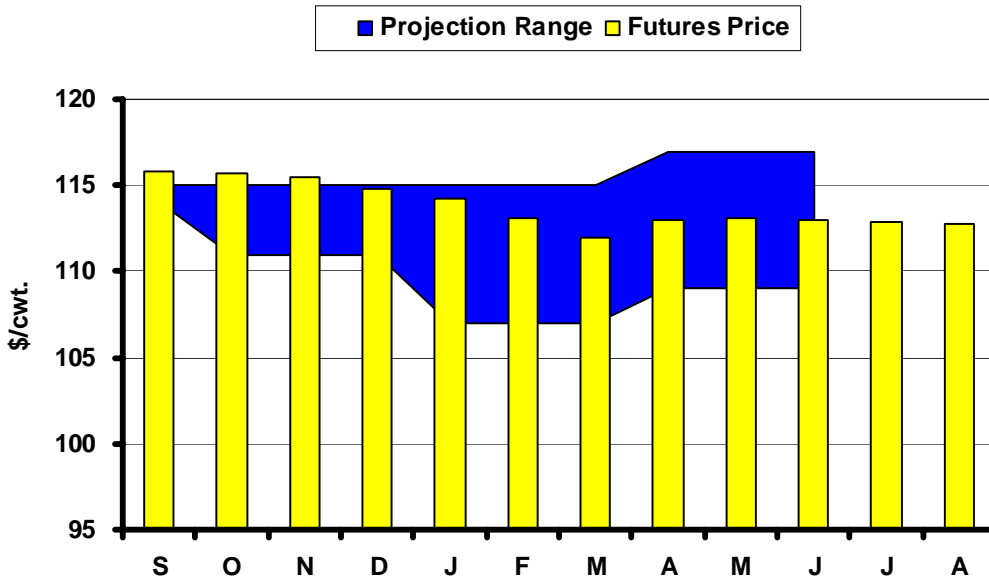


Fig. 5. Live Cattle Futures and Projections



Sources: CME & USDA-WASDE, September 12, 2007

Fig. 6. Feeder Cattle Futures and Projections



Sources: CME & USDA-ERS, September 20, 2007

In the Chute

October 12: Live Cattle Projections (WASDE)

October 12: *Crop Production* (NASS)October 19: *Cattle on Feed* (NASS)**Live Cattle Futures, Monthly Average of Nearby Contract (\$/cwt.)**

	<i>Jan</i>	<i>Feb</i>	<i>Mar</i>	<i>Apr</i>	<i>May</i>	<i>Jun</i>	<i>Jul</i>	<i>Aug</i>	<i>Sep</i>	<i>Oct</i>	<i>Nov</i>	<i>Dec</i>
2002	71.40	73.03	72.82	67.18	62.17	62.87	68.07	65.07	68.78	68.40	73.46	74.44
2003	80.56	80.61	74.68	77.60	73.71	73.80	73.37	79.80	86.14	97.25	95.47	92.09
2004	77.18	77.20	79.39	83.14	83.52	83.88	85.44	84.92	84.50	86.71	85.68	88.32
2005	89.88	89.92	88.89	94.79	85.62	83.00	79.37	80.78	85.70	89.49	91.46	94.07
2006	95.43	91.34	83.85	80.65	76.87	81.56	84.08	87.14	90.72	89.40	86.60	86.88
2007	91.55	93.34	98.30	98.07	92.35	89.06	91.93	92.65				

Source: CME. Note: The data reflect the average of the daily closes.

Sioux Falls Price - Slaughter Steers, Choice 2-4, 1100-1300# (\$/cwt.)

	<i>Jan</i>	<i>Feb</i>	<i>Mar</i>	<i>Apr</i>	<i>May</i>	<i>Jun</i>	<i>Jul</i>	<i>Aug</i>	<i>Sep</i>	<i>Oct</i>	<i>Nov</i>	<i>Dec</i>
2002	66.85	69.75	70.75	68.56	65.85	63.63	61.44	62.20	63.81	64.60	67.33	70.58
2003	75.30	76.44	75.88	79.05	78.13	75.75	75.63	79.94	88.81	100.35	105.00	92.38
2004	82.38	77.88	86.70	88.44	89.75	88.00	83.69	83.50	81.70	82.44	81.75	85.95
2005	88.50	86.25	90.65	92.31	88.88	84.00	79.44	78.30	84.65	86.44	89.58	91.25
2006	93.81	89.31	85.85	81.31	81.33	81.75	80.89	84.00	87.00	85.88	83.81	84.13
2007	86.42	89.44	95.31	95.75	95.10	86.25	87.75	89.30				

Source: USDA-AMS. Note: Prices from 2004 onward are for Choice 2-3, 1300-1500#.

Sioux Falls Live Cattle Basis (\$/cwt.)

	<i>Jan</i>	<i>Feb</i>	<i>Mar</i>	<i>Apr</i>	<i>May</i>	<i>Jun</i>	<i>Jul</i>	<i>Aug</i>	<i>Sep</i>	<i>Oct</i>	<i>Nov</i>	<i>Dec</i>
2002	-4.55	-3.28	-2.07	1.38	3.68	0.76	-6.63	-2.87	-4.97	-3.80	-6.13	-3.86
2003	-5.26	-4.17	1.20	1.45	4.42	1.95	2.26	0.14	2.67	3.10	9.53	0.29
2004	5.20	0.68	7.31	5.30	6.23	4.12	-1.75	-1.42	-2.80	-4.27	-3.93	-2.37
2005	-1.38	-3.67	1.76	-2.48	3.26	1.00	0.07	-2.48	-1.05	-3.05	-1.88	-2.82
2006	-1.62	-2.03	2.00	0.66	4.46	0.19	-3.19	-3.14	-3.72	-3.52	-2.79	-2.75
2007	-5.13	-3.90	-2.99	-2.32	2.75	-2.81	-4.18	-3.35				

Note: The data reflect the difference between the monthly Sioux Falls' slaughter cattle price and the monthly average of the nearby live cattle futures prices.

Sioux Falls Price - Slaughter Cows, Commercial 2-4 (\$/cwt.)

	<i>Jan</i>	<i>Feb</i>	<i>Mar</i>	<i>Apr</i>	<i>May</i>	<i>Jun</i>	<i>Jul</i>	<i>Aug</i>	<i>Sep</i>	<i>Oct</i>	<i>Nov</i>	<i>Dec</i>
2002	42.90	45.38	49.13	48.75	47.60	48.38	45.13	43.20	44.25	43.30	40.50	39.67
2003	42.20	45.50	46.75	51.00	54.17	54.50	54.90	57.50	60.44	60.75	58.33	60.50
2004	53.25	52.13	54.60	60.75	64.88	65.60	65.81	64.63	62.80	60.50	62.75	58.75
2005	61.67	58.47	64.40	65.50	67.38	66.75	64.56	58.50	60.17	57.38	58.95	59.88
2006	57.13	59.13	59.94	58.75	60.75	59.63	57.50	58.56	60.67	60.19	54.13	53.70
2007	52.50	55.58	56.83	62.75	62.88	62.25	64.00	64.30				

Source: USDA-AMS. Note: December 2006 was estimated using the average spread over heavy breakers.

South Dakota Stocker Cattle Prices, Monthly Averages (\$/cwt.)

	<i>Jan</i>	<i>Feb</i>	<i>Mar</i>	<i>Apr</i>	<i>May</i>	<i>Jun</i>	<i>Jul</i>	<i>Aug</i>	<i>Sep</i>	<i>Oct</i>	<i>Nov</i>	<i>Dec</i>
2002	100.45	101.77	100.97	95.98	94.91	92.76	87.93	91.66	93.04	87.77	88.94	94.80
2003	94.20	93.36	96.84	99.02	103.41	105.61	101.47	107.21	112.13	112.71	111.38	111.63
2004	110.80	108.25	114.59	117.22	123.88	135.57	133.68	141.20	129.81	126.50	121.59	122.32
2005	125.77	128.34	135.10	138.99	139.13	142.62	130.68	130.80	134.00	135.36	136.85	136.84
2006	140.59	138.06	136.10	131.46	130.54	131.67	134.42	133.57	137.13	123.49	113.16	115.15
2007	113.22	118.92	124.38	129.14	128.80	132.43	128.78	128.55				

Source: USDA-AMS. Note: The data reflect a weighted average of 5-600# No. 1 medium and medium and large steers.

CME Feeder Cattle Index (\$/cwt.)

	<i>Jan</i>	<i>Feb</i>	<i>Mar</i>	<i>Apr</i>	<i>May</i>	<i>Jun</i>	<i>Jul</i>	<i>Aug</i>	<i>Sep</i>	<i>Oct</i>	<i>Nov</i>	<i>Dec</i>
2002	83.36	82.57	80.40	76.23	75.45	75.96	76.98	78.57	80.56	81.20	82.89	85.02
2003	81.90	77.80	76.27	78.73	80.62	85.01	88.70	94.10	100.21	105.25	104.13	100.82
2004	89.40	86.96	90.10	93.70	103.21	112.00	116.15	117.54	114.15	113.82	108.89	106.22
2005	104.89	103.19	104.97	110.70	111.47	112.61	112.37	111.09	115.04	117.27	122.10	115.38
2006	113.60	109.60	103.69	101.67	97.13	110.16	114.62	115.70	117.94	110.26	100.71	99.85
2007	96.67	97.57	103.39	107.91	107.68	107.59	112.03	116.31				

Source: CME. Note: The data reflect the average of the daily CME Feeder Cattle Index.

South Dakota Stocker Cattle Basis Relative to the CME Feeder Cattle Index (\$/cwt.)

	<i>Jan</i>	<i>Feb</i>	<i>Mar</i>	<i>Apr</i>	<i>May</i>	<i>Jun</i>	<i>Jul</i>	<i>Aug</i>	<i>Sep</i>	<i>Oct</i>	<i>Nov</i>	<i>Dec</i>
2002	14.66	16.95	19.04	19.45	19.07	22.67	17.71	15.47	9.64	10.05	10.14	15.23
2003	12.30	15.56	20.57	20.29	22.79	20.60	12.77	13.11	11.92	7.46	7.25	10.81
2004	21.40	21.29	24.49	23.52	20.67	23.57	17.53	23.66	15.66	12.68	12.70	16.10
2005	20.88	25.15	30.13	28.29	27.66	30.01	18.31	19.71	18.96	18.09	14.75	21.46
2006	26.99	28.46	32.41	29.79	33.41	21.51	19.80	17.87	19.19	13.23	12.45	15.30
2007	16.55	21.35	20.99	21.23	21.12	24.84	16.75	12.24				

Futures Markets

Live	9/20/2007	8/17/2007	Change	Feeder	9/20/2007	8/17/2007	Change
OCT 07	96.70	95.47	1.23	SEP 07	116.40	116.87	-0.47
DEC 07	100.18	97.87	2.30	OCT 07	116.20	117.22	-1.02
FEB 08	101.58	98.80	2.78	NOV 07	116.38	117.32	-0.94
APR 08	101.25	99.05	2.20	JAN 08	114.20	114.97	-0.77
JUN 08	97.08	94.62	2.46	MAR 08	112.00	112.20	-0.20
AUG 08	95.30	93.50	1.80	APR 08	113.00	112.60	0.40
OCT 08	97.95			MAY 08	113.05	112.60	0.45
DEC 08	98.80			AUG 08	112.80	112.60	0.20
FEB 09	99.30						

Source: CME.